

MAR/APR 2026

Ear Brain

INTEGRATION

WHEN
LISTENING
AFFECTS
LEARNING

Understanding
Auditory
Processing.

MARCH 3 –
WORLD
HEARING DAY

Early detection saves
development.



A Letter from the Founders

Dear Families and Community,

It is with great joy and purpose that I welcome you to the very first edition of Ear Brain Integration.

This publication was created to bring clarity, education, and hope to families navigating challenges related to hearing, learning, attention, and communication. Too often, these difficulties are misunderstood — yet they deeply impact confidence, academic growth, and quality of life.

At Ear Brain Integration, we believe that sound enters through the ear, but meaning is shaped in the brain. When we strengthen that connection, we unlock potential.

This first edition reflects our mission: to combine science, integrity, and personalized care to support every individual — regardless of diagnosis — in reaching their fullest capacity.

Thank you for allowing us to be part of your journey.

With commitment and hope,



Dr. Vanessa Messias, AuD, CCC-A
Founder & Doctor of Audiology,
Neuro-Auditory Specialist & Speech Therapist

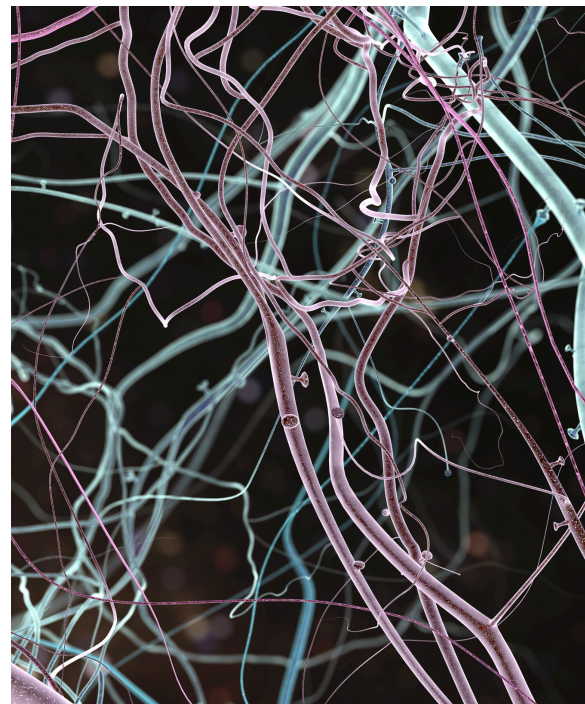
Marcelo Messias
Co-Founder & Managing Director



Marketing & Magazine: Danielle Prado @daniprado_mkt



Photo: Paula Andrade Photography



CONTENTS

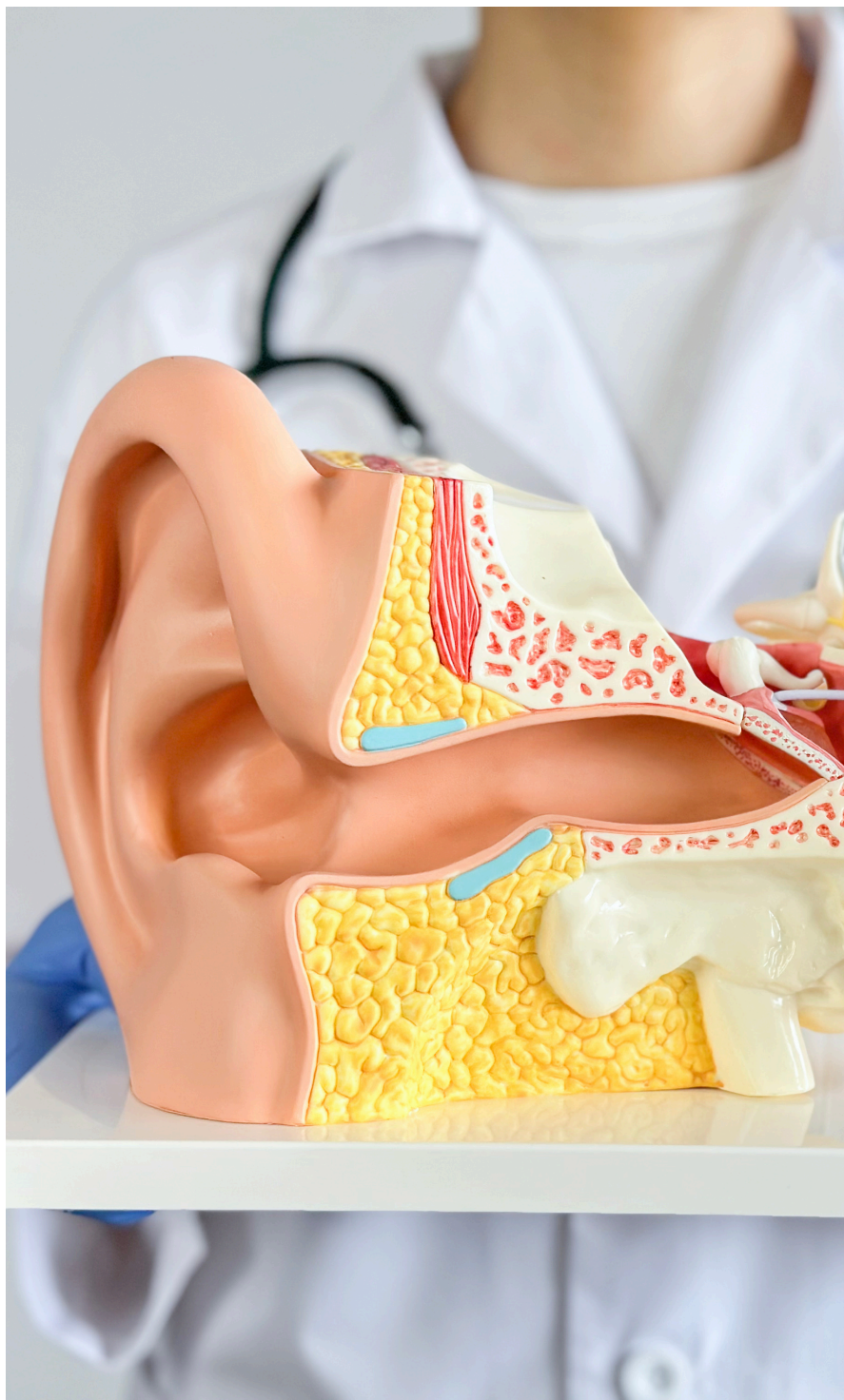
1
ABOUT EAR BRAIN
INTEGRATION

2
THE IMPORTANCE OF
EVALUATION

3
INTERVIEW WITH DR
VANESSA MESSIAS

4
WORLD HEARING DAY

5
SERVICES



Ear Brain
INTEGRATION



“A diagnosis informs us. Integration empowers us.”



ABOUT EAR BRAIN INTEGRATION

Advanced Audiology & Neurodevelopment
in Houston

ABOUT EAR BRAIN INTEGRATION

Advanced Audiology & Neurodevelopment in Houston

Ear Brain Integration is a Katy-based specialized audiology and neurodevelopment center dedicated to evaluating and treating disorders related to hearing, auditory processing, communication, learning, attention, and balance across the lifespan.

Recognized as a reference center in Audiology & Neurodevelopment in the Houston area, the clinic combines advanced diagnostics, evidence-based therapies, and family-centered care to deliver comprehensive and individualized treatment.

Our clinical model is built on a fundamental principle:

Hearing is not merely the detection of sound — it is a complex neurological process.

Listening involves:

- Peripheral hearing (ear function)
- Neural transmission (auditory nerve pathways)
- Cortical processing (brain interpretation)
- Language integration
- Cognitive organization
- Emotional and social response



ABOUT EAR BRAIN INTEGRATION

Sound enters through the ear.

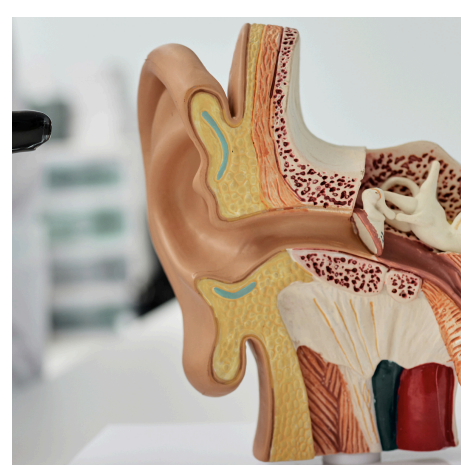
The brain gives it meaning.

Language transforms it into communication.

Communication shapes identity, learning, and human connection.

When this intricate **pathway is disrupted**, the impact may appear as speech delay, academic challenges, attention difficulties, behavioral frustration, social withdrawal, or balance disorders.

Our mission is to restore and strengthen the entire ear-brain pathway — empowering individuals to thrive in communication, learning, and daily life.



FOUNDER & CLINICAL DIRECTOR



Photo: Paula Andrade Photography

Dr. Vanessa Messias is a Doctor of Audiology and extensive clinical and leadership experience in Brazil and the United States.

Her multidisciplinary background integrates auditory science, neurodevelopment, education, and communication systems.

Academic & Clinical Expertise

- Doctor in Audiology
- Advanced training in Central Auditory Processing
- Certified in the PROMPT Method (motor speech intervention)
- Certified in the Tomatis Method (auditory neurostimulation)
- Certified in RITA-T (Rapid Interactive Screening Test for Autism in Toddlers – Boston, ages 0–3)
- Certified in DIR Floortime (Virginia, USA – autism intervention)
- Leadership training in school-based learning systems
- Former Coordinator of an Audiology Network in Brazil (3 clinics)
- Former Hearing Aid Industry Representative
- Aeronautical Medical Expert in Brazil

Her expertise allows her to integrate medical rigor, developmental insight, and educational strategy into every evaluation and intervention plan.

MANIFESTO

EAR BRAIN INTEGRATION

We believe listening goes far beyond hearing sounds. Listening is understanding, connecting, learning, and expressing ourselves in the world.

We understand that many communication, learning, and attention challenges do not stem from a lack of ability — but from how the brain processes sound.

That is why we do not treat isolated symptoms. We investigate the root cause.

Every person who comes to us brings a story, a struggle, and a hope.

We listen with care, evaluate with science, and treat with intention.

We integrate hearing, brain function, language, and cognition so development can happen in a functional, respectful, and achievable way — from infancy through adulthood.

Here, a diagnosis does not define limits.

Process brings clarity.

Growth is built step by step.

We work so children can learn with less effort, adults can communicate with greater confidence, and families can find direction, security, and hope.

Because when listening is organized, communication flows, and learning becomes possible.

Ear Brain Integration

Functional Auditory Integration to strengthen listening, communication, and learning — from infancy to adulthood.





THE IMPORTANCE OF EVALUATION

THE IMPORTANCE OF EVALUATION

Many challenges related to communication, learning, and attention are often misunderstood.

Children may be labeled as inattentive. Adults may assume they are simply “getting older.”

Academic struggles may be attributed to lack of effort.

However, the root cause may lie in hearing, auditory processing, or neurodevelopmental integration.

A comprehensive evaluation allows us to:

- Detect hearing loss early
- Identify central auditory processing disorder
- Assess speech understanding
- Evaluate vestibular (balance) function
- Develop personalized intervention plans

Early identification leads to better developmental, academic, and cognitive outcomes.



Photo: Paula Andrade Photography



SIGNS & SYMPTOMS ACROSS THE LIFESPAN

Infants (0–3 Years)

- Limited response to sounds
- Delayed babbling
- Lack of reaction to name
- Delayed speech milestones

Children

- Difficulty understanding instructions
- Trouble hearing in noisy classrooms
- Reading and spelling challenges
- Frequent requests for repetition
- Listening fatigue

Adolescents & Adults

- Difficulty understanding speech in groups
- Tinnitus (ringing in the ears)
- Auditory overload
- Difficulty focusing during conversations

Older Adults

- Increasing TV volume
- Social withdrawal
- Balance instability
- Communication frustration



WHEN TO SEEK PROFESSIONAL HELP

You should schedule an evaluation if:

- A newborn fails hearing screening
- A child has speech delay
- Academic performance declines
- Persistent tinnitus occurs
- Dizziness or vertigo is present
- Listening difficulty continues despite effort

Listening challenges are neurological — not behavioral weaknesses.



TYPES OF DIAGNOSTIC TESTS

Hearing evaluation may include:

- Pure Tone Audiometry
- Speech Audiometry
- Tympanometry
- Otoacoustic Emissions (OAE)
- Auditory Brainstem Response (ABR)
- Central Auditory Processing Testing
- Vestibular Screening

Each test evaluates a different part of the ear-brain pathway.



Photo: Paula Andrade Photography



EXCLUSIVE INTERVIEW

Interview with Dr. Vanessa Messias, AuD, CCC-A

Doctor of Audiology | Neuro-Auditory Specialist

In this conversation, she shares her perspective on evaluation, intervention, and how early support can transform outcomes across the lifespan.



Photo: Paula Andrade Photography

“A diagnosis does not define the future.”

— Dr. Vanessa Messias, AuD

1. At what age should a child or adult be evaluated?

Hearing can and should be evaluated from birth. Newborn hearing screening is extremely important, but evaluation doesn't stop there. We assess patients from infancy to adulthood because listening and processing challenges can appear at any stage of life.

For babies, we use objective tests that don't require verbal responses. For children and adults, we perform comprehensive hearing exams along with auditory processing and functional assessments. The key is understanding that hearing is not only about detecting sound — it's about how the brain interprets it.

2. What are common signs that indicate someone may need an evaluation?

In babies, we look for limited response to sound or delays in babbling and speech milestones. In children, signs may include difficulty following directions, asking for repetition often, struggling in noisy environments, unclear speech, or academic challenges.

Teenagers and adults may say, “I can hear, but I don't understand,” especially in group settings. Others experience tinnitus, dizziness, or mental fatigue when listening for long periods. Many times, the issue isn't the ear itself — it's how the brain organizes sound.

3. What is the difference between hearing loss and auditory processing disorder?

Hearing loss happens when the ear does not detect sound properly. Auditory processing disorder occurs when the ear hears the sound, but the brain has difficulty interpreting and organizing it. It's like receiving a message that becomes scrambled along the way. This can affect attention, reading, memory, comprehension, and overall learning performance.

4. How does intervention work at Ear Brain Integration?

We begin with a comprehensive evaluation. From there, we create an individualized treatment plan that may include auditory training, speech and language therapy, cognitive stimulation, the Tomatis Method for auditory neuromodulation, functional communication strategies, and family guidance.

No two brains are the same. Each plan is personalized and structured.

5. What message would you like to leave for families?

A diagnosis does not define the future. It simply gives us direction. With proper evaluation, structured intervention, and family support, children and adults can strengthen listening, improve learning, communicate more confidently, and live with greater independence.

If there is doubt, evaluate. Clarity brings peace — and progress.



WORLD HEARING DAY – MARCH 3

A global reminder that hearing health is
brain health.

WORLD HEARING DAY – MARCH 3

World Hearing Day promotes awareness of:

- Early hearing screening
- Noise exposure prevention
- Access to hearing care
- Lifelong auditory health

Caring for hearing means protecting communication and cognitive vitality.



TESTIMONIAL – DANI PRADO



“I was 18 years old when I first learned that I had difficulty hearing high-frequency sounds. It was during a hearing test for a telemarketing job. I still remember that moment — it felt like the ground had been pulled from under my feet.

For most of my life, I convinced myself it was “just high-pitched sounds.” I minimized it. I adapted. I compensated. I didn’t realize how much I had been working twice as hard just to keep up.

In March 2025, when I met Dr. Vanessa, everything changed. For the first time, I truly understood how deeply this limitation had affected me — not only in what I could hear, but in how I communicated, how I understood conversations, and how confident I felt in social and professional situations.

It wasn’t just about missing sounds.

My brain was missing pieces of language.

There were moments in my life when I felt insecure and didn’t know why. Moments when I doubted my comprehension. Moments when I thought the problem was me.

Through Dr. Vanessa’s careful and detailed evaluation, I began a structured auditory training process. Step by step, we prepared my brain and my ears. And then came the day I tried my hearing aid. I heard sounds I didn’t even know existed.

It was overwhelming in the most beautiful way. Subtle details. Soft frequencies. Layers of sound that had always been there — but not for me.

With each session, my confidence grew. My understanding became clearer. My communication became more natural. My self-esteem strengthened.

Today, I no longer see my hearing aid as a limitation. It is not a weakness. It is freedom.

It is simply an essential tool — like glasses for vision — allowing me to live, communicate, and connect more fully with the world around me.

— Dani Prado



SERVICES



Integrated Service Portfolio

Comprehensive solutions in hearing, brain function, language, and learning — for children, adults, and families.



Hearing Services



Auditory Processing Disorder (APD)



Speech Therapy



Tomatis Method (Neurodevelopment)



Communication & Performance (Adults)



Guidance & Education



1) HEARING SERVICES

- Newborn Hearing Screening
- Pediatric Hearing Assessment
- Adult Hearing Assessment
- Hearing Aids
- Auditory Rehabilitation
- Auditory Verbal Therapy (AVT)
- Tinnitus Evaluation & Treatment
- Vestibular (Balance) Assessment & Treatment

2) AUDITORY PROCESSING DISORDER (APD)

- Auditory Processing Evaluation
- Auditory Training Programs
- Listening and Learning Strategies
- Environmental Modifications
- Assistive Listening Technology
- Speech and Language Therapy

3) SPEECH THERAPY

- Pediatric Speech
- Adult and Senior Speech
- Voice Therapy
- Dyslexia
- Infant and Toddler Group
- Cognitive Speech Therapy
- KLP (Keep Learning Portuguese) - Bilingual Program for English/Portuguese.

4) TOMATIS METHOD (NEURODEVELOPMENT)

- Neurosensory auditory stimulation that activates the brain
- Uses music and voice to improve attention and processing
- Supports cognitive, emotional, and motor development
- Non-invasive and suitable for all ages
- Enhances therapy results and accelerates progress

5) COMMUNICATION & PERFORMANCE (ADULTS)

- Functional communication training
- Voice projection training
- Articulation & clarity improvement
- Auditory processing intervention (without hearing loss)
- Communication & presence workshops

6) GUIDANCE & EDUCATION

- Parent guidance
- Courses & workshops for parents
- Educational lectures
- E-books & educational materials
- Events, podcasts & educational content



www.earbrainintegration.com



[@earbrain_integration](https://www.instagram.com/earbrain_integration)



23410 Grand Reserve Drive, unit 1103 Katy/Texas



+1 (407) 421-3439



Ear Brain
INTEGRATION